

SAILING INSTRUCTIONS (SIs)

NEW ZEALAND MULTIHULL YACHT CLUB

PIC Harbour Classic

9 March 2024

The Organising Authority (OA) is:

The NZ Multihull Yacht Club

www.harbourclassic.co.nz

1 RULES

- 1.1 The race will be governed by the rules as defined in the latest edition of *The Racing Rules of Sailing* along with the Auckland Council Navigation Bylaw 2021.
- 1.2 The following safety regulations apply as per The Yachting New Zealand Safety Regulations 2021 - 2024:
 - Keelboats and Multihulls - Part II, Category 5
 - Trailer Yachts and Sport Trailer Yachts– Part V, Category B
 - Sportboats - Part VI, Category A
 - Sport Multihulls - Part VII
- 1.3 Each yacht shall have at least one handheld waterproof multichannel VHF radio
- 1.4 If equipped, Yachts shall be entitled to use their motors within the 5 minute warning procedure up until the start time.
- 1.5 The wearing of lifejackets is recommended.

- 1.1 A boat shall not discharge trash into the water.

2 CHANGES TO SAILING INSTRUCTIONS

- 2.1 Any change to the sailing instructions will be posted before 0900 on the day it will take effect.
- 2.2 Changes to a sailing instruction may be made on the water by the hoisting of Flag L with one sound. Any changes or notices will be given over vhf channel 77.

3 COMMUNICATIONS WITH COMPETITORS

3.1 Notices to competitors will be posted on the website for the event at harbourclassic.co.nz

3.2 The race office is located at the Wynyard Pavilion Bar and Restaurant located at 17 Jellicoe Street, North Wharf, Wynyard Quarter

3.3 On the water, the race committee intends to monitor and communicate with competitors on VHF radio channel 77.

3.4 The following communications will be made by the race committee on VHF channel 77:

- Countdown to the warning signal.
- Postponement or Abandonment (if needed)
- Amended Course (due to adverse weather)

4 SCHEDULE OF RACES

<i>Day/Date</i>	<i>Class</i>	<i>Number of races</i>	<i>Time of First Warning Signal</i>
9 March 2024	All	1	11.55

4.1 To alert boats that a race will begin soon, the orange starting line flag will be displayed with one sound at least five minutes before a warning signal is made.

5 CLASS FLAGS

5.1 The Class flag shall be a green flag.

6 COURSES

6.1 *The diagram in SI Addendum A shows the course, including the approximate angles between legs, the order in which marks are to be passed, and the side on which each mark is to be left. The approximate course length is 16.5 NM.

6.2 The Course may be shorted due to adverse weather.

7 MARKS

7.1 *Mark descriptions are as follows:

Mark	Description
1	Torbay Yellow Racing Buoy (Stb)
2	Northern Leading Yellow Racing Buoy (Stb)
Start – Port End	North Head Yellow Racing Buoy
Start – Starboard End	Committee Boat – Lady Nada
Finish – Port End	Committee Boat Lady Nada
Finish – Starboard End	North Head Yellow Racing Buoy

8 THE START

8.1 Races will be started using RRS 26 with the warning signal made Five minutes before the starting signal. The preparatory signal will be the Black Flag, RRS 30.4 (Black Flag Rule) will apply.

8.2 Boats are permitted to use their motor until the start signal. This is to allow boats to avoid a collision and manoeuvre safely, not to gain an advantage at the start line.

8.3 The starting line is between a staff displaying an orange flag on the committee vessel at the starboard-end and the course side of the port-end starting mark. The starting line has an approximate east/west bearing. There may be an inner distance mark off the back of the committee vessel. Boats must not go between the committee vessel and the inner distance mark.

8.4 A boat that does not start within ten minutes after her starting signal will be scored Did Not Start without a hearing. This changes RRS A5.1 and A5.2.

9 THE FINISH

9.1 The finishing line is between a staff displaying a blue flag on the committee vessel at the port end and the course side of the starboard end finishing mark. The finishing line has an approximate north/south bearing.

10 PENALTY SYSTEM

10.1 The Scoring Penalty, RRS 44.3, applies. The penalty is 40% added time to the boats elapsed finish time.

11 TIME LIMIT

11.1 The time limit is 5 hours.

11.2 Failure to meet the Target Time will not be grounds for redress. This changes RRS 62.1(a).

12 HEARING REQUESTS

12.1 The protest time limit is 60 minutes after the last boat finishes.

12.2 Hearing request forms are available from the race office at race head quarters at the Wynyard Pavilion Bar and Restaurant, 17 Jellicoe Rd, North Wharf.

12.3 Notices will be posted no later than 30 minutes after the protest time limit to inform competitors of hearings in which they are parties or named as witnesses. Hearings will be held in the protest room, located at *Royal New Zealand Yacht Squadron* beginning at 7.00pm on Wednesday 14th March.

12.4 RRS 62.2(a) and 66.2(a) do not apply.

12.5 Immediately after finishing a boat intending to protest shall, in addition to the requirements of RRS61.1(a), inform the race committee on the committee vessel at the finishing line of her intention to protest and the identity of the boat(s) protested. The protesting boat must receive an acknowledgement from the race committee. This changes RRS 61.

13 HANDICAPS

Handicaps will be provided by the organising club based on, but modified from the Race Track System. These will be posted on the website the evening before the event.

14 DIVISIONS

The number and splits of divisions will be defined by the OA once entries close. These will be posted on the website the evening before the event.

15 SAFETY REGULATIONS

15.1 A boat that retires from a race shall notify the race committee at the first reasonable opportunity on VHF Channel 77.

16 OFFICIAL VESSELS

16.1 The official committee/start/finish boat will be the 14m catamaran "Lady Nada".

17 PRIZEGIVING

17.1 The prizegiving will be held at Te Whero Island in the Viaduct from 6.30pm on Saturday 9th March. This is a short walk across the bridge from Jellicoe/North Wharf. Trophies and medals will be awarded for -

- First on handicap
- First online overall
- First multihull online
- First monohull online
- First, second and third on handicap for each division
- First in Class
- First Yacht Club (Lowest total score of top 5 finishers from each club)

18 RISK STATEMENT

18.1 RRS 3 states: 'The responsibility for a boat's decision to participate in a race or to continue to race is hers alone.' By participating in this event each competitor agrees and acknowledges that sailing is a potentially dangerous activity with inherent risks. These risks include strong winds and rough seas, sudden changes in weather, failure of equipment, boat handling errors, poor seamanship by other boats, loss of balance on an unstable platform and fatigue resulting in increased risk of injury. Inherent in the sport of sailing is the risk of permanent, catastrophic injury or death by drowning, trauma, hypothermia, or other causes.

19 INSURANCE

19.1 Each participating boat shall be insured with valid third-party liability insurance with a minimum cover of \$5,000,000 per incident or the equivalent.

20 EVENTS – please visit <https://www.harbourclassic.co.nz/raceweekend> to get a full overview of the weekend itinerary.

Friday 8th March 2024

- BERTHING ZONE - Boats will be able to berth at Jellicoe/North Wharf from midday Friday. Please refer to the diagram on the website under berthing zones as to where you can tie up. <https://www.harbourclassic.co.nz/berthingzones>. PLEASE NOTE - You need a **code** for both the **access** gate and glass door to enable you to get from your boat to Wynyard Pavilion/public areas etc. These codes will be emailed to you separately.
- REGISTRATION AND BRIEFING will take place at 7.00 pm at Wynyard Pavilion Garden Bar, 17 Jellicoe Wharf, Wynyard Quarter
- WELCOME PARTY – 7.30pm, Wynard Pavilion Garden Bar

Saturday 9 April 2024

- BREAKFAST – Breakfast is available at Wynyard Pavilion from 8.30am.
- RACE – Race starts 12 noon

- PRIZEGIVING - 6.30pm on Te Whero Island, Viaduct Harbour on a purpose-built stage.

Sunday 10th March 2024

- 12 noon – all boats to have departed Jellicoe/North Wharf.

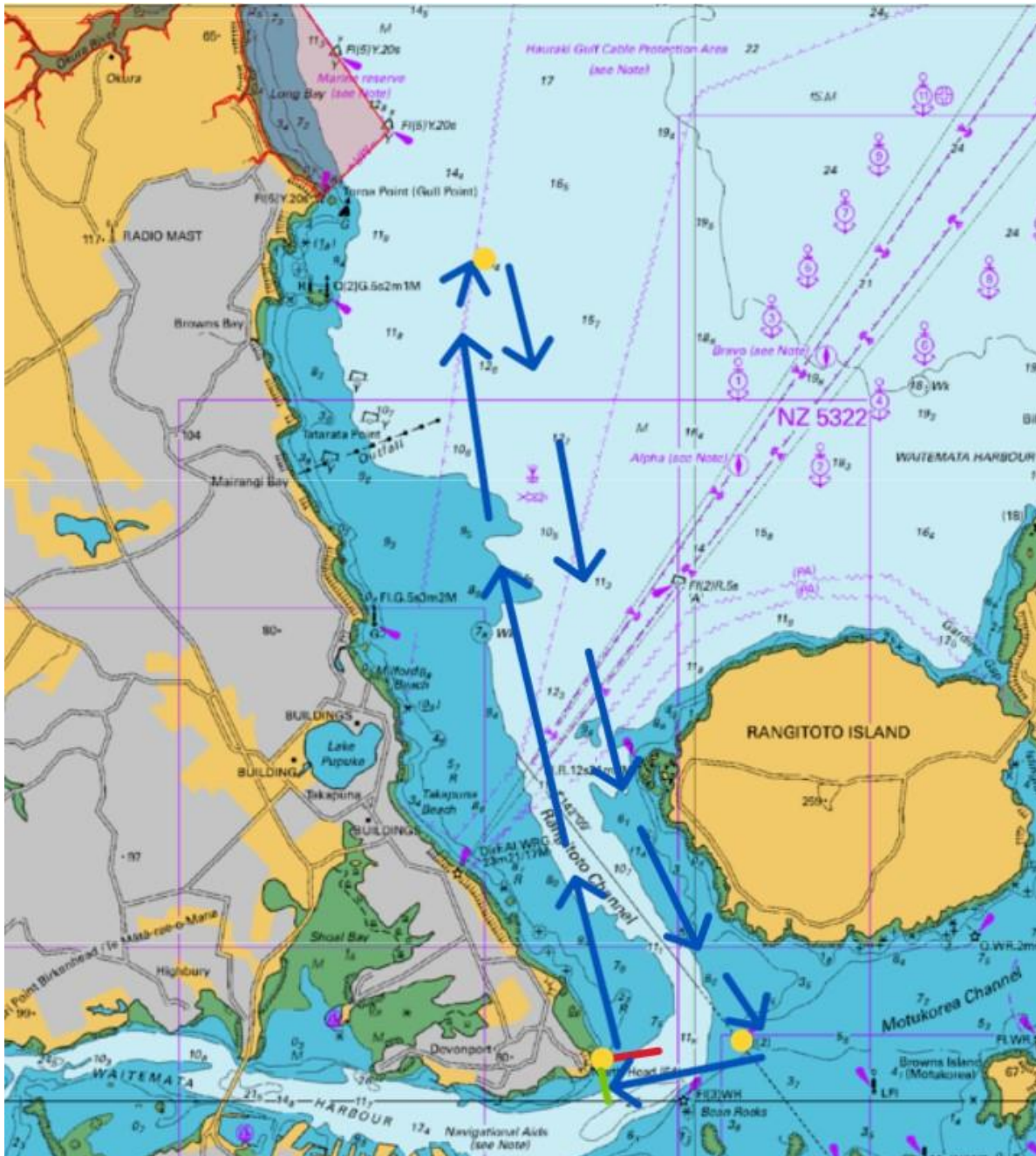
RACE & EVENT MANAGEMENT:

Event Director:	Fran Holland	fran@multihull.org.nz 029 239 5449
Race Director:	Megan Kensington	021 306 180
Media:	Fran Holland	fran@multihull.org.nz 029 239 5449
Finish Boat	Adrian Percival	021 229 4005

Addendum A Racing Areas

Torbay Buoy 36°42.50S 174°47.30E
Lady Nada Will be anchored on a transit between Northhead buoy and Northern Leading Buoy.
Leading Buoy.

From the start at North Head Racing Buoy, to Torbay Bay Racing Buoy (Starboard) to Northern Leading Racing Buoy (Starboard) to the finish at between the North Head Racing Marker and the Finish Boat (the finish boat will be approximately south of the north head buoy).



START/FINISH BOAT

